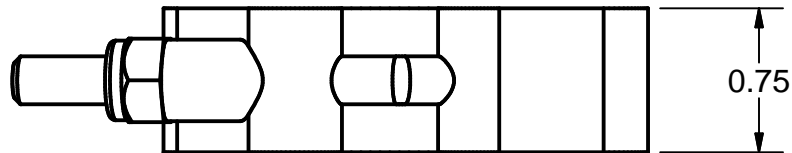


2

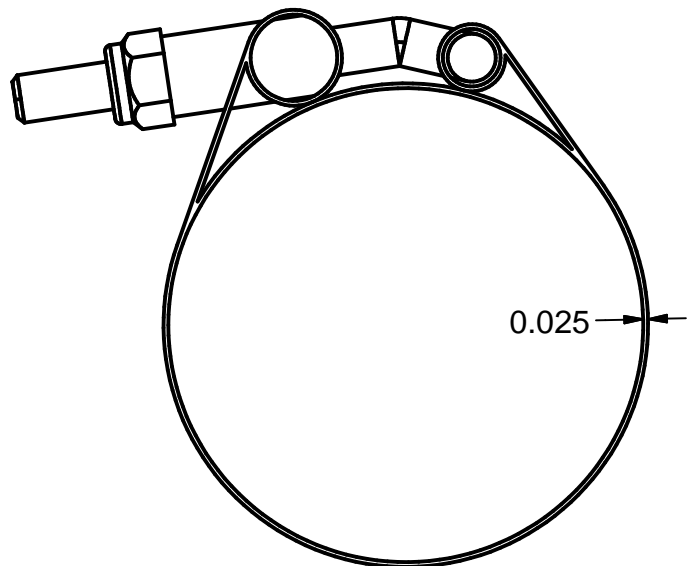


1



B

B



Note:

Matl: 300 Series Stainless Steel

Clamp Min = Ø2.31

Clamp Max = Ø2.62

Torque to 80 in-lbs for assembly.

Max Torque = 125 in-lbs.

Model for representation purposes only.



A

A



BANJO CORPORATION

150 BANJO DRIVE, CRAWFORDSVILLE, IN 47933
WEB SITE: WWW.BANJOCORP.COM
E-MAIL: SALES1@BANJOCORP.COM

THIS DRAWING AND ALL INFORMATION CONTAINED THEREON ARE THE EXCLUSIVE PROPERTY OF BANJO CORPORATION.

UNLESS SPECIFICALLY NOTED, THIS DRAWING AND ITEMS SHOWN ON THIS DRAWING ARE SUBJECT TO CHANGE AT ANY TIME.

DESCRIPTION
2 5/16" - 2 5/8" T-Bolt Clamp

PART NUMBER
TC231

2



1